

A photograph of a skyscraper's facade at dusk. The building's exterior is composed of a grid of windows, many of which are reflecting the warm, orange and yellow light of the setting sun. The sky is a mix of orange, pink, and blue. In the background, other city buildings are visible, some with lights on. The overall scene is a dense urban landscape captured during the 'blue hour'.

LAGOM 218



LAGOM 218001-02-03-04-Ashlar

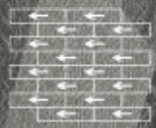
2.5 : 2.5 : 3 : 2

IN STOCK 现货



LAGOM 218002-Ashlar

IN STOCK 现货



LAGOM 218001-02-03-Ashlar

1:1:1

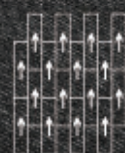
IN STOCK 现货



LAGOM 218013-03-Herringbone

2:8

IN STOCK 现货



LAGOM 218004-Ashlar
IN STOCK 现货

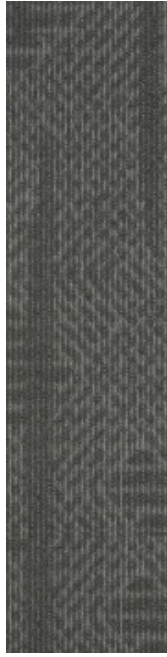


LAGOM 218002-04-14-Herringbone

2.5 : 5 : 2.5
IN STOCK 现货



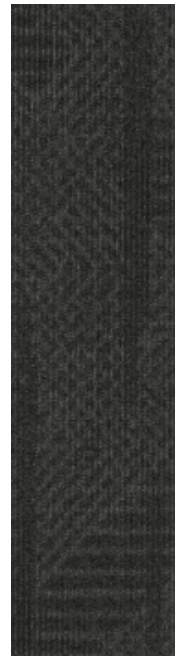
LAGOM 218001
▲ IN STOCK 现货



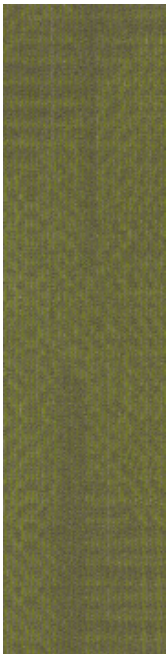
LAGOM 218002
▲ IN STOCK 现货



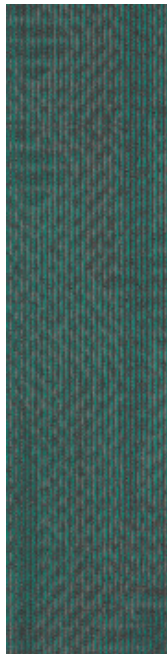
LAGOM 218003
▲ IN STOCK 现货



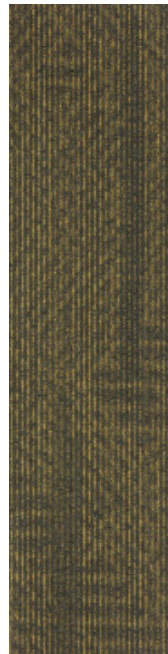
LAGOM 218004
▲ IN STOCK 现货



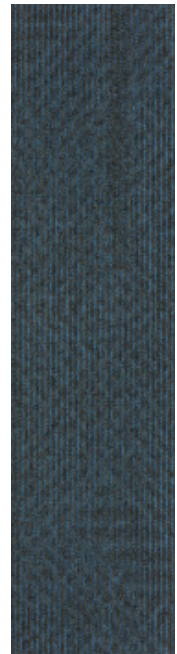
LAGOM 218011
▲ IN STOCK 现货



LAGOM 218012
▲ IN STOCK 现货



LAGOM 218013
▲ IN STOCK 现货

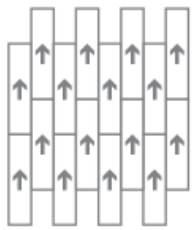


LAGOM 218014
▲ IN STOCK 现货

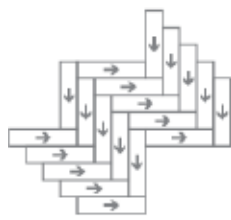
Specification 技术指标

Product Name 产品名称	LAGOM 218
Product Code 产品编码	LAGOM 218
Tufted construction 簇绒结构	Multi-Level loop 高低圈绒
Fiber 纱线	100% Synthetic Fibre 100% 合成纤维
Dye method 染色工艺	Solution Dyed 原液染色
Gauge 针距	1/12
Tufted weight(g/m ²) 绒重(克/平方米)	550±5%
Tile size(mm) 地毯尺寸(毫米)	250 x 1000
Pile height(mm) 平均绒高(毫米)	4.0±0.5
Total thickness(mm) 总厚度(毫米)	6.5±0.5
Standard Backing 标准底背	Glass fiber reinforced PVC

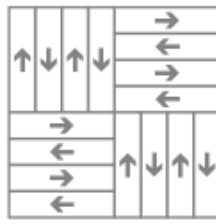
Recommended installation methods 建议铺装方式



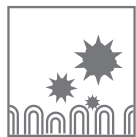
Ashlar
上下错半



Herringbone
人字铺



Basketweave
网篮形



Anti-fouling



Anti-static



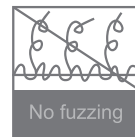
Environmental



Passed various tests



Fashion colors



100%B,C,F Yarn



Reduced Flammability



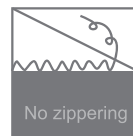
Isolation acoustic



Colorfast



Chair roulettes



No edge ravel



Wear resistance



Soil Resistance



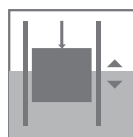
Wear Warranties



Dimensional Stability



Long life-span



Easy to transport



Non-moid